

Aquece Rio – International Sailing Regatta 2015
13 –22 August 2015

SAILING INSTRUCTIONS

Amendment 1 – 14 August 2015

Amendment 1: 1.6, 4.2, 4.3, 4.6, 4.7, 7.3, 7.6, 9.2, 10.3, 10.4, 12.5, 13.1, 15.2, 21.5.4, 22.3, 22.6, 22.11, 25.1

1. RULES

- 1.1 The regatta will be governed by the rules as defined in *The 2013-2016 Racing Rules of Sailing* (RRS). Other documents under RRS Definition: Rule (g) include:
 - 1.1.1 The Aquece Rio – International Sailing Regatta 2015 Equipment Regulations (ER).
 - 1.1.2 The Aquece Rio – International Sailing Regatta 2015 Support Team (including Support Boat) Regulations (STR).
 - 1.1.3 The Aquece Rio – International Sailing Regatta 2015 Competitor Media Guide (CMG).
 - 1.1.4 Appendix P, Special Procedures for Rule 42.
 - 1.1.5 For medal races, ISAF Addendum Q, Umpired Fleet Racing, will apply and takes precedence over any conflicting instructions.
- 1.2 No national authority prescriptions will apply.
- 1.3 Decisions of the International Jury will be final as provided in RRS 70.5.
- 1.4 For the Men's Skiff, Women's Skiff and Mixed Two Person Multihull, RRS 44.1 and RRS P2.1 are changed so that the Two-Turns Penalty is replaced by the One-Turn Penalty.
- 1.5 In all rules governing this regatta;
 - 1.5.1 [DP] denotes a rule for which the penalty is at the discretion of the International Jury;
 - 1.5.2 [SP] denotes a rule for which a standard penalty may be applied by the race committee without a hearing or a discretionary penalty applied by the International Jury with a hearing; and
 - 1.5.3 [NP] denotes a rule that shall not be grounds for protests by a boat. This changes RRS 60.1(a).
- 1.6 RRS 63.7 is changed to read: 'If there is a conflict between rules, the protest committee shall resolve that conflict in the manner that it believes will provide the fairest result **for** all boats affected.'
- 1.7 If there is a conflict between languages the English text will take precedence.

2. SAFETY REGULATIONS [DP] [NP]

- 2.1 Competitors shall wear personal flotation devices at all times while afloat, except briefly while changing or adjusting clothing or personal equipment.
- 2.2 Boats not leaving the harbour for a scheduled race shall promptly notify the Race Office.
- 2.3 [SP] Before leaving to race on each scheduled racing day, each crew shall personally sign out on the required race committee form located at the Omega container beside the launching ramps in the Marina da Gloria and at Flamengo Beach. From the 13-22 August boats shall only sail outside the Marina da Gloria for training or racing between 1100 and 1715.
- 2.4 [SP] Within the protest time limit after returning ashore, each crew shall personally sign in on the required form, located at the same place as indicated in SI 2.3.
- 2.5 A boat that retires from racing shall notify the Race Committee before leaving the racing area, or if that is not possible, shall notify the race office as soon as possible after returning ashore.
- 2.6 Boats retiring from racing shall complete a retirement declaration form at the race office before the protest time limit.
- 2.7 In accordance with NoR 15, Berthing, boats shall return to and remain in their assigned places in the boat park.
- 2.8 Boats shall not sail outside their assigned race areas after arriving there, unless they sail directly back to the Venue. Boats shall avoid the ferry routes shown in Addendum A when possible. When not possible boats shall cross the ferry route as near to right angles as possible and shall not interfere with any ferry.

3. CODE OF CONDUCT [DP]

- 3.1 Competitors shall comply with any reasonable request from a regatta official.
- 3.2 Competitors shall handle any boats or equipment provided by the organizing authority with proper care and seamanship, without interfering with its functionality, and in compliance with any written instructions.
- 3.3 Boats that are on a Course Area or passing through a Course Area to which they are not assigned shall remain clear of the area where boats are racing and any official boat.

4. COMMUNICATIONS WITH COMPETITORS

- 4.1 Notices to competitors will be posted on the official notice board located at Flamengo Beach.
- 4.2 **Notices will also be posted at www.sailing.org/Olympics/rio2016/results/notices** Failure to post a notice on the website will not be grounds for redress. This changes RRS 62.
- 4.3 When a visual signal is displayed over an **Event flag**, the signal applies only to **that Event**. This changes the Race Signals preamble.
- 4.4 Signals ashore will be displayed beside the launching ramps for the One Person Dinghies, Two Person Dinghies and the Skiffs and at Flamengo Beach for the Windsurfers and Mixed Multihull.
- 4.5 When flag AP is displayed ashore, '1 minute' is replaced with 'not less than 30 minutes' for the Race Area Pão de Açúcar, 'not less than 60 minutes' for Race Areas Ponte and Escola Naval, 'not less than 75 minutes' for Race Areas Copacabana and Niterói and 'not less than 90 minutes' for Race Area Pai in the race signal AP.

4.6 **DELETED**

- 4.7 **[SP] [NP]** A boat shall not leave the shore until flag D is displayed ashore. The warning signal will be made not less than 30 minutes for the Race Area Pão de Açúcar; not less than 60 minutes for Race Areas Ponte and Escola Naval, not less than 75 minutes for Race Areas Copacabana and Niteroi and not less than 90 minutes for Race Area Pai after flag D is displayed or not before the schedule time, whichever is later.

5. CHANGES TO SAILING INSTRUCTIONS

- 5.1 Except for changes to the schedule of races and course assignments changes to the sailing instructions will be posted no later than two hours before the scheduled time of the first race affected.
- 5.2 Any change to the sailing instructions will be approved by the ISAF Principal Race Officer and the ISAF Technical Delegate.

6. FORMAT OF RACING

- 6.1 The format for each Event consists of an opening series and a Medal Race.
- 6.2 Opening Series

For the opening series of each Event the number of races scheduled is as follows:

Event	Number of races	Maximum Races per Day
Men's One Person Dinghy Women's One Person Dinghy Men's One Person Dinghy Heavyweight Men's Two Person Dinghy Women's Two Person Dinghy	10	3
Men's Windsurfer Women's Windsurfer Men's Skiff Women's Skiff Mixed Multihull	12	4

6.3 Medal Race

- 6.3.1 A Medal Race will be scheduled for each Event with 6 or more opening series races completed.
- 6.3.2 The ten boats ranked highest in the opening series will be assigned to compete in the medal race.
- 6.3.3 Assignments to a Medal Race will be based on the ranking available at 0800 on the day of the Medal Race. The protest committee may extend the time limit.

7. SCHEDULE OF RACES AND COURSE AREA ASSIGNMENTS

- 7.1 The provisional race schedule, including the time of the first warning signals and assignment of Events to Course Areas is shown in SI Addendum C.
- 7.1.1 An update to SI Addendum C will be posted by 1700 on 13 August.
- 7.1.2 An update to SI Addendum C will be posted daily no later than 2000 the previous evening.

- 7.2 Any reassignment of Events to course areas will be posted by 0900 on the day it will take effect, however:
- 7.2.1 When flag AP is displayed ashore, 30 minutes before flag AP for that Event is removed; or
- 7.2.2 when flag AP is displayed afloat, the course area may be changed. The Race Committee signal boat will display flag L over the Event(s) flag and move to the new Course Area.
- 7.3 Races not sailed on the scheduled day may be sailed on a following day at the discretion of the race committee, including sailing an opening series race on the provisional medal race or reserve medal race day. **A medal race will not be scheduled on the same day as an opening series race for that Event.**
- 7.4 The warning signal for each succeeding race will be made as soon as practicable.
- 7.5 To alert boats that a race or sequence of races will begin soon, the orange starting line flag will be displayed with one sound at least five minutes before a warning signal is made.
- 7.6 On the last scheduled day of racing for each Event, no warning signal for an opening series race will be made after 1600 and **after** 1625 for a medal race.

8. COURSE AREAS

The course areas are shown in SI Addendum A.

9. THE COURSES

- 9.1 The diagrams in SI Addendum B show the courses, the course designations, the approximate angles between legs, the order in which marks are to be passed, and the side on which each mark is to be left.
- 9.2 **No later than the warning signal, the Race Committee signal vessel will display the course signal and, except for Men's Windsurfer and Women's Windsurfers, the approximate compass bearing of the first leg.**

10. MARKS

- 10.1 Marks 1, 2, 3, and 4, offset, or associated gate marks, will be as follows:

<u>Course Area</u>	<u>Marks 1, 2, 3, 4</u>	<u>New Mark</u>	<u>Inflatable Starting Line Mark</u>	<u>Inflatable Finishing Line Mark</u>
Pão de Açúcar	Red cylindrical	Red with black strip cylindrical	Red cylindrical	Red cylindrical
Escola Naval	Green cylindrical	Green with black strip cylindrical	Green cylindrical	Green cylindrical
Bridge Ponte	Orange cylindrical	Orange with black strip cylindrical	Orange cylindrical	Orange cylindrical
Niterói	Yellow cylindrical	Yellow with black strip cylindrical	Yellow cylindrical	Yellow cylindrical
Copacabana	Red cylindrical	Red with dark green strip	Red cylindrical	Red cylindrical

		cylindrical		
Pai	Orange cylindrical	Orange with dark green strip cylindrical	Orange cylindrical	Orange cylindrical

10.2 Offset marks will be the same as Mark 1, 2, 3, 4. The starting and finishing line marks will be race committee vessels or inflatable marks.

10.3 Marks S1, S2, and S3 **will be yellow cylindrical marks.**

10.4 The starting and finishing line marks will be Race **Committee** vessels or inflatable marks.

11. EVENT FLAGS

Event flags will be class insignia on the following background:

<u>Event</u>	<u>Class Insignia</u>	<u>Background Colour</u>
Men's Windsurfer	RS:X	White
Women's Windsurfer	RS:X	Light Blue
Men's One Person Dinghy	Laser Standard	White
Women's One Person Dinghy	Laser Radial	Light Blue
Men's One Person Dinghy Heavy	Finn	White
Men's Skiff	49er	White
Women's Skiff	49er FX	Light Blue
Men's Two Person Dinghy	470	White
Women's Two Person Dinghy	470	Light Blue
Mixed Two-Person Multihull	Nacra	White

12. THE START

12.1 The starting line will be between a staff displaying an orange flag on the race committee vessel at the starboard end and either

12.1.1 the course side of the port-end inflatable starting mark, or

12.1.2 a staff displaying an orange flag on the race committee vessel at the port end.

12.2 A buoy may be attached to the race committee starting vessel anchor line just below keel depth. Boats shall not pass between this buoy and the race committee starting vessel at any time. This buoy is part of the race committee starting vessel ground tackle. [DP]

12.3 When a starting sequence is in progress, boats whose warning signal has not been made shall avoid the starting area. The starting area is defined as a rectangle 50 meters from the starting line and marks in all directions. [DP]

12.4 If flag U has been displayed as the preparatory signal, no part of a boat's hull, crew or equipment shall be in the triangle formed by the ends of the starting line and the first mark during the last minute before her starting signal. If a boat breaks this rule and is identified,

she shall be disqualified without a hearing but not if the race is restarted or re-sailed. This changes RRS 26 and A5. When flag U is displayed as the preparatory signal, RRS 29.1 does not apply. The scoring abbreviation for a flag U penalty is UFD. This changes RRS A11.

- 12.5 To alert boats that a race or sequence of races will begin soon, the orange starting line flag will be displayed with one sound at least five minutes before a **warning** signal is made.
- 12.6 The Race Committee may test the new 'Numeric' starting system. Any decision to use the 'Numeric' starting system will be posted with a notice defining the rules, by 2000 on the evening before any races it will affect.

13. COURSE CHANGES

- 13.1 To change the next leg of the course, the race committee will (a) lay a new mark, or (b) move the finishing line, or (c) move the leeward gate. When a new mark is laid, the original mark will be removed as soon as possible. When in a subsequent change a new mark is replaced, it will be replaced by an original mark. **When Mark 1 has been replaced, Mark 1a will not be reset. This changes RRS 33.**
- 13.2 Courses will not be shortened. This changes RRS 32.

14. THE FINISH

- 14.1 The finishing line will be between a staff displaying an orange flag on the race committee vessel and either:
 - 14.1.1 the course side of the nearby inflatable finishing mark, or
 - 14.1.2 a staff displaying an orange flag on the nearby race committee vessel.

15. TIME LIMITS AND TARGET TIMES

- 15.1 For opening series, time limits and target times in minutes are as follows:

Event	Time Limit	Mark 1 Time Limit	Finish Window	Target Time
Men's Windsurfer	45	20	10	20-25
Women's Windsurfer	45	20	10	20-25
Men's One Person Dinghy	75	25	15	50
Women's One Person Dinghy	75	25	15	50
Men's One Person Dinghy Heavyweight	75	25	15	50
Men's Two Person Dinghy	75	25	15	50
Women's Two Person Dinghy	75	25	15	50
Men's Skiff	50	20	10	30
Women's Skiff	50	20	10	30
Mixed Multihull	50	20	10	30

- 15.2 For medal race series, time limits and target times in minutes are as follows:

Class	Time Limit	Mark 1 Time Limit	Finish Window	Target Time
Men's Windsurfer	40	10	10	20
Women's Windsurfer	40	10	10	20
Men's One Person Dinghy	40	15	10	25
Women's One Person Dinghy	40	15	10	25
Men's One Person Dinghy Heavyweight	40	15	10	25
Men's Two Person Dinghy	40	15	10	25
Women's Two Person Dinghy	40	15	10	25
Men's Skiff	40	10	10	20
Women's Skiff	40	10	10	20
Mixed Multihull	40	10	10	20

15.3 If no boat has passed Mark 1 within the Mark 1 Time Limit the race will be abandoned.

15.4 Boats failing to finish within the time stated in the Finish Window after the first boat sails the course and finishes will be scored Did Not Finish. This changes RRS 35, A4 and A5.

16. EQUIPMENT INSPECTION [DP]

16.1 The last sentence in RRS 78.2 is changed by replacing 'event' with 'opening series'.

16.2 The Equipment Inspection Committee (EIC) is responsible for all equipment inspection functions. The Chairman of the EIC may appoint one or more panels or persons to carry out the functions of the EIC.

16.3 Add RRS 60.4. The EIC may protest a boat for a breach of a Class Rule, RRS 43, rules relating to personal equipment or a rule of the ER. The EIC may report an alleged breach of other rules to the Race Committee.

16.4 Delete RRS 43.1(c) and 78.3. In RRS 60.2 delete: 'However, when the Race Committee receives a report required by rule 43.1(c) or 78.3, it shall protest the boat.'

16.5 Throughout RRS 61 replace 'race committee' with 'race committee or Equipment Inspection Committee'.

16.6 The substitution of equipment will not be permitted unless approved by the EIC in accordance with the ER.

17. REPLACEMENT OF CREW [DP]

For One Person boats crew substitution is not permitted. For Two Person boats crew substitution is not permitted except in case of proven accident or illness and shall be approved in writing by the organizing authority.

18. OFFICIAL BOATS

18.1 Official boats will be marked as follows:

First Aid / Medical	Red Boat from Bombeiros (Fireman)
Rescue	"Rescue" red under white background

Course Marshals	"Marshall" red under white background
Race Committee	Orange flag
Equipment Inspection	"Measurer" white under violet background
Jury/Judges	"Jury" white under blue background
PRO	"PRO" blue under white background
Organizers / VIP	"VIP" white under pink background
ISAF	"Technical Delegate" green under white background
Swiss Timing	"Repeater" white under blue background
General media	"Media" white under green background

- 18.2 Actions by official boats or helicopters shall not be grounds for requesting redress by a boat. This changes RRS 60.1(b).

19. SUPPORT TEAMS

- 19.1 Support Teams will be required to comply with local legislation and the STR.

20. IDENTIFICATION AND ADVERTISING WHILE RACING [SP] [NP]

- 20.1 When provided by the organizing authority, boats or competitors shall carry, display or wear the following as instructed:
- 20.1.1 Bibs for all competitors;
 - 20.1.2 Coloured bibs for Event leaders (1st, 2nd and 3rd);
 - 20.1.3 Coloured dots on the mainsail for Event leaders (1st, 2nd, 3rd);
 - 20.1.4 National letters on the bow;
 - 20.1.5 Event advertising;
 - 20.1.6 Cameras and sound equipment; and
 - 20.1.7 Tracking and timing system equipment.
- 20.2 [SP] In accordance with NoR 2.3 boats shall display national flags on their sails as specified in NoR Appendix 3.

21. SCORING

- 21.1 The Low Point System of RRS Appendix A will apply. RRS B8 is deleted.
- 21.2 When fewer than three opening series races have been completed, a boat's series score will be the total of her race scores. When three or more opening series races have been completed, a boat's series score will be the total of her race scores excluding her worst score. However, the score from any Medal Race will not be excluded.
- 21.3 A boat starting later than 4 minutes after her starting signal will be scored Did Not Start. This changes RRS A4 and A5.
- 21.4 One race is required to be completed to constitute a regatta.
- 21.5 Medal race:

- 21.5.1 For the Medal Race RRS A4.1 is changed so that the points are doubled. RRS A4.2 is changed so that the scores are based on the number of boats assigned in that race and then doubled.
- 21.5.2 For boats assigned to compete in the medal race, ties will be broken by the Medal Race score. This changes RRS A8. For tied boats with the same points score in the Medal Race, ties will be broken applying RRS A8 to the opening series scores.
- 21.5.3 The boats competing in the medal race shall be ranked highest in the regatta. This may not apply to a boat disqualified under RRS 5, 6 or 69.
- 21.5.4 A boat assigned to compete in the Medal Race shall make a genuine effort to start, sail the course and finish. The penalty for a breach of this instruction will be ranking the boat tenth in the regatta. If there are two such boats, they will be ranked ninth and tenth, in order of their opening-series ranks, and so on. This changes RRS A2 and A5.
- 21.6 To request correction of an alleged error in posted race or series results, a boat may complete a scoring enquiry form available at the race office.

22. PROTESTS, PENALTIES AND REQUESTS FOR REDRESS

- 22.1 Protest forms are available at the race or jury office, located at Flamengo Beach. Protests and requests for redress or reopening shall be delivered to the jury office within the appropriate time limit.
- 22.2 For each Event, the protest time limit is 60 minutes after the last boat has finished the last race of the day for Race Areas Pão de Açúcar, Ponte and Escola Naval and 90 minutes for Race Areas Copacabana, Niteroi and Pai.
- 22.3 Notices will be posted within 30 minutes of the protest time limit to inform competitors of hearings in which they are parties or named as witnesses. Hearings will be held in the jury office beginning at the time posted. Hearings may be scheduled to begin up to 30 minutes before the end of protest time.
- 22.4 Notices of protests by the Race Committee, Equipment Inspection Committee or International Jury will be posted to inform boats under RRS 61.1(b).
- 22.5 A list of boats that have been penalized under Appendix P for breaking RRS 42 and under SI 22.8 will be posted.
- 22.6 Penalties for breaches of NoR 7 (Equipment Inspection), the Equipment Regulations, the Competitors' Media Guide, class rules, or rules in the NoR and SIs marked [DP] or [SP] in the event of a hearing, are at the discretion of the International Jury.
- 22.7 Breaches of NoR 7 (Equipment Inspection) and NoR 19 (Insurance) or rules in the SIs marked [NP] will not be grounds for a protest by a boat. This changes RRS 60.1(a).
- 22.8 For breaches of the NoR and the SIs marked [SP], the Race Committee may apply a standard penalty without a hearing or a discretionary penalty may be applied by the International Jury with a hearing. A list of these breaches and the associated standard penalties will be posted on the Official Notice Board. However, the Race Committee may protest a boat when they consider the standard penalty to be inappropriate. This changes RRS 63.1 and RRS A5.
- 22.9 On the last scheduled day of the opening series for each Event a request for reopening a hearing shall be delivered:
 - 22.9.1 within the protest time limit if the requesting party was informed of the decision on the previous day;

22.9.2 no later than 30 minutes after the requesting party was informed of the decision on that day;

This changes RRS 66.

- 22.10 On the last scheduled day of the opening series for each Event a request for redress based on a protest decision shall be delivered no later than 30 minutes after the decision was posted. This changes RRS 62.2.
- 22.11 Any penalty **or score adjustment** imposed on the day of a Medal Race before going afloat will be notified to all competitors by posting a notice in the launching area before Flag D is displayed for that Event.

23. RADIO COMMUNICATIONS [DP]

A boat shall neither make radio transmissions while racing nor receive radio communications not available to all boats, except in an emergency or when using equipment provided by the race committee. This restriction also applies to mobile telephones.

24. PRIZES

- 24.1 Medals will be awarded to the top 3 boats in each Event.

25. TRACKING EQUIPMENT [SP] [NP]

- 25.1 Before Competition/before Racing

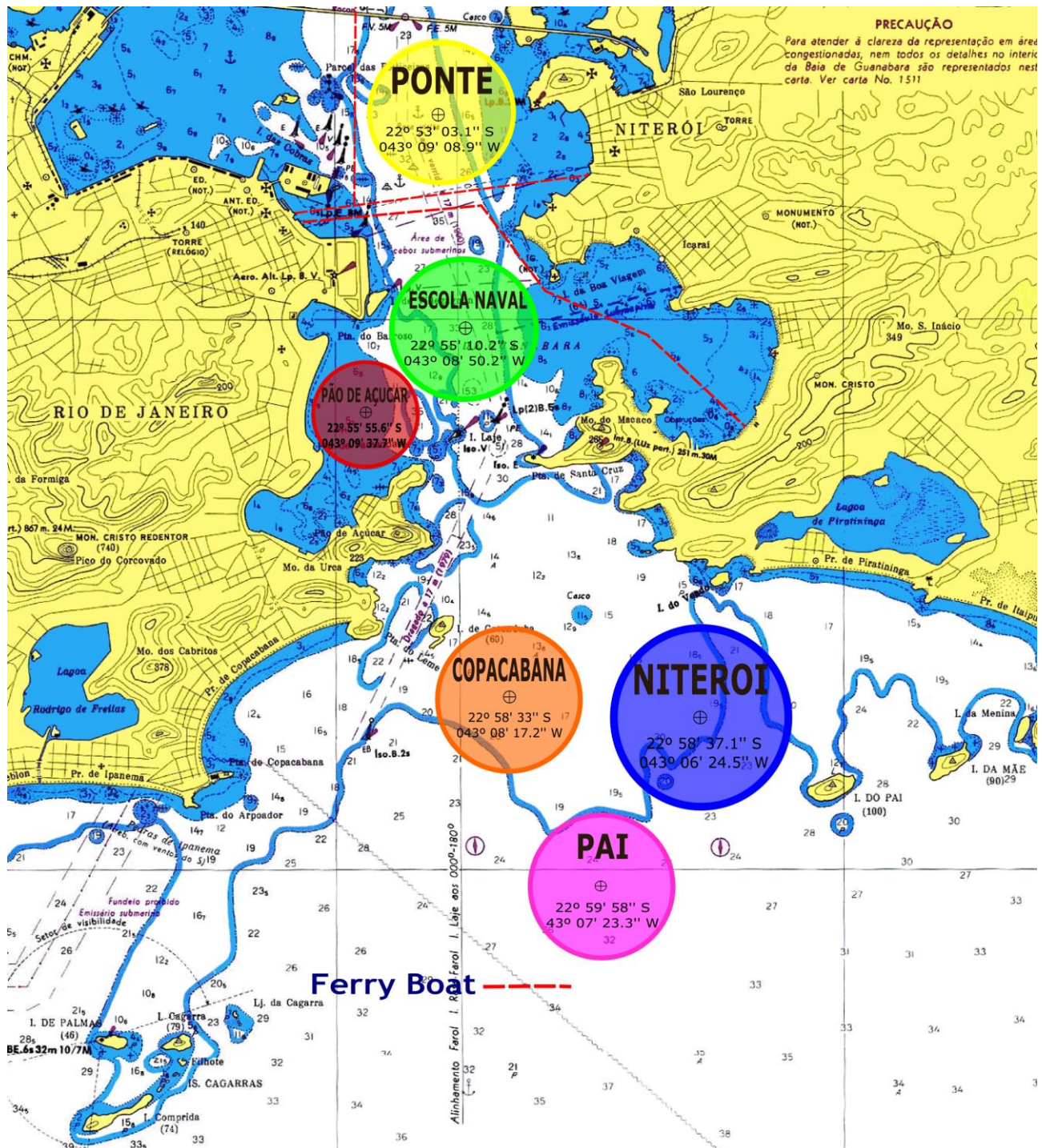
A tracking socket will be supplied to all competitors from their assigned tracking desk.

Competitors shall securely mount the socket to their boat as per the supplied instructions. Competitors shall collect a tracking module from their assigned tracking desk, which must be securely fitted to the tracking socket before racing each day. The tracking desks will be located in the Omega container beside the launching ramps in Marina da Gloria and at Flamengo Beach.

- 25.2 Return to Shore

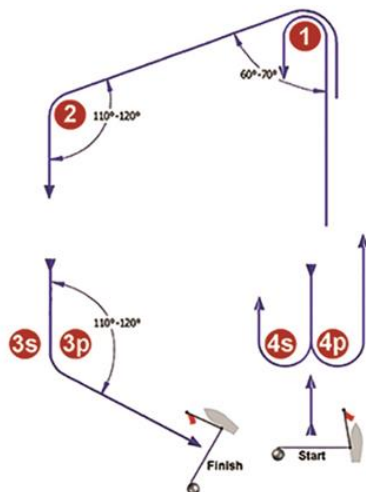
Competitors shall return the tracking module within the protest time limit to the same place that they received it.

ADDENDUM A – COURSE AREAS



ADDENDUM B – COURSE DIAGRAMS

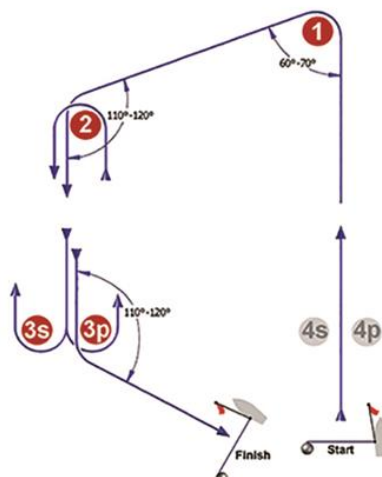
I



Course: Inner Trapezoid

Signal	Mark Rounding Order
I2	Start - 1 - 4s/4p - 1 - 2 - 3p - Finish
I3	Start - 1 - 4s/4p - 1 - 4s/4p - 1 - 2 - 3p - Finish
I4	Start - 1 - 4s/4p - 1 - 4s/4p - 1 - 4s/4p - 1 - 2 - 3p - Finish

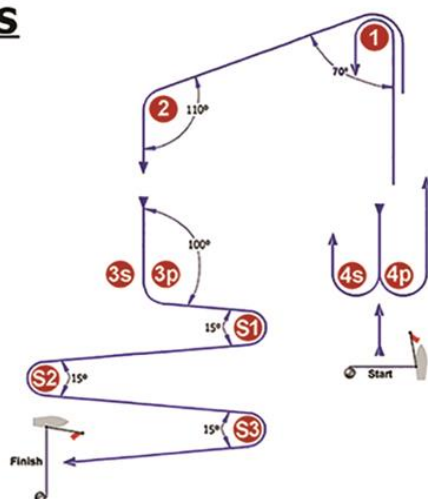
O



Course: Outer Trapezoid

Signal	Mark Rounding Order
O2	Start - 1 - 2 - 3s/3p - 2 - 3p - Finish
O3	Start - 1 - 2 - 3s/3p - 2 - 3s/3p - 2 - 3p - Finish
O4	Start - 1 - 2 - 3s/3p - 2 - 3s/3p - 2 - 3s/3p - 2 - 3p - Finish

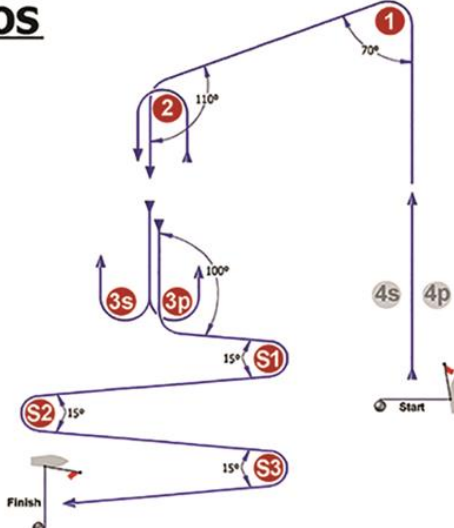
IS



Course: Inner Slalom

Signal	Mark Rounding Order
IS2	Start - 1 - 4s/4p - 1 - 2 - 3p - S1 - S2 - S3 - Finish
IS3	Start - 1 - 4s/4p - 1 - 4s/4p - 1 - 2 - 3p - S1 - S2 - S3 - Finish
IS4	Start - 1 - 4s/4p - 1 - 4s/4p - 1 - 4s/4p - 1 - 2 - 3p - S1 - S2 - S3 - Finish

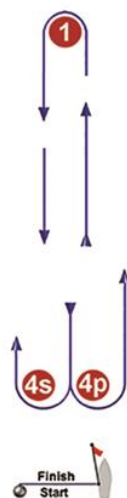
OS



Course: Outer Slalom

Signal	Mark Rounding Order
OS2	Start - 1 - 2 - 3s/3p - 2 - 3p - S1 - S2 - S3 - Finish
OS3	Start - 1 - 2 - 3s/3p - 2 - 3s/3p - 2 - 3p - S1 - S2 - S3 - Finish
OS4	Start - 1 - 2 - 3s/3p - 2 - 3s/3p - 2 - 3s/3p - 2 - 3p - S1 - S2 - S3 - Finish

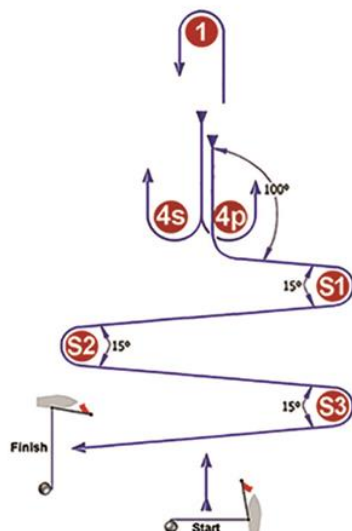
L



Course: Windward / Leeward

Signal	Mark Rounding Order
L2	Start - 1 - 4s/4p - 1 - Finish
L3	Start - 1 - 4s/4p - 1 - 4s/4p - 1 - Finish
L4	Start - 1 - 4s/4p - 1 - 4s/4p - 1 - 4s/4p - 1 - Finish

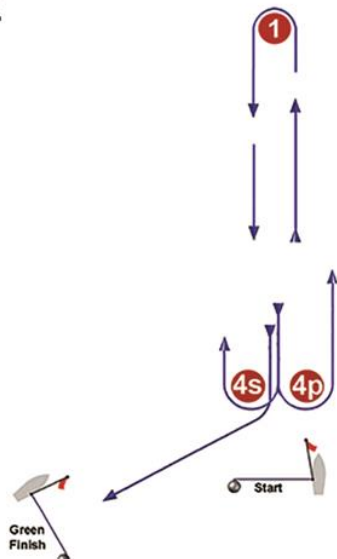
LS



Course: Windward/Leeward With Slalom Finish

Signal	Mark Rounding Order
LS2	Start - 1 - 4s/4p - 1 - 4p - S1 - S2 - S3 - Finish
LS3	Start - 1 - 4s/4p - 1 - 4s/4p - 1 - 4p - S1 - S2 - S3 - Finish
LS4	Start - 1 - 4s/4p - 1 - 4s/4p - 1 - 4s/4p - 1 - 4p - S1 - S2 - S3 - Finish

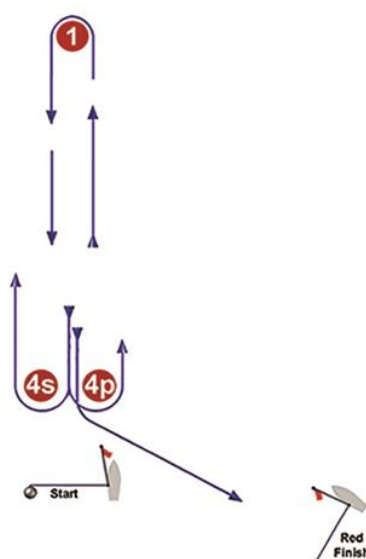
LG



Course: Windward / Leeward

Signal	Mark Rounding Order
LG2	Start - 1 - 4s/4p - 1 - 4s - Finish
LG3	Start - 1 - 4s/4p - 1 - 4s/4p - 1 - 4s - Finish
LG4	Start - 1 - 4s/4p - 1 - 4s/4p - 1 - 4s/4p - 1 - 4s - Finish

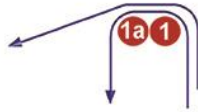
LR



Course: Windward / Leeward

Signal	Mark Rounding Order
LR2	Start - 1 - 4s/4p - 1 - 4p - Finish
LR3	Start - 1 - 4s/4p - 1 - 4s/4p - 1 - 4p - Finish
LR4	Start - 1 - 4s/4p - 1 - 4s/4p - 1 - 4s/4p - 1 - 4p - Finish

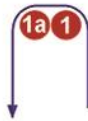
IA



Course: Same As Course I Except with Offset Mark 1A

Signal	Mark Rounding Order
IA2	Start - 1 - 1a - 4s/4p - 1 - 1a - 2 - 3p - Finish
IA3	Start - 1 - 1a - 4s/4p - 1 - 1a - 4s/4p - 1 - 1a - 2 - 3p - Finish
IA4	Start - 1 - 1a - 4s/4p - 1 - 1a - 4s/4p - 1 - 1a - 4s/4p - 1 - 1a - 2 - 3p - Finish

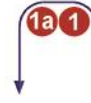
LA



Course: Same As Course L Except with Offset Mark 1A

Signal	Mark Rounding Order
LA2	Start - 1 - 1a - 4s/4p - 1 - 1a - Finish
LA3	Start - 1 - 1a - 4s/4p - 1 - 1a - 4s/4p - 1 - 1a - Finish
LA4	Start - 1 - 1a - 4s/4p - 1 - 1a - 4s/4p - 1 - 1a - 4s/4p - 1 - 1a - Finish

LGA



Course: Same as LG Except With Offset Mark 1a

Signal	Mark Rounding Order
LGA2	Start - 1 - 1a - 4s/4p - 1 - 1a - 4s - Finish
LGA3	Start - 1 - 1a - 4s/4p - 1 - 1a - 4s/4p - 1 - 1a - 4s - Finish
LGA4	Start - 1 - 1a - 4s/4p - 1 - 1a - 4s/4p - 1 - 1a - 4s/4p - 1 - 1a - 4s - Finish

LRA



Course: Same as LR Except With Offset Mark 1a

Signal	Mark Rounding Order
LRA2	Start - 1 - 1a - 4s/4p - 1 - 1a - 4p - Finish
LRA3	Start - 1 - 1a - 4s/4p - 1 - 1a - 4s/4p - 1 - 1a - 4p - Finish
LRA4	Start - 1 - 1a - 4s/4p - 1 - 1a - 4s/4p - 1 - 1a - 4s/4p - 1 - 1a - 4p - Finish

ADDENDUM C – PROVISIONAL SCHEDULE OF RACES AND COURSE AREA ASSIGNMENTS

Event	Saturday 15		Sunday 16		Monday 17		Tuesday 18		Wednesday 19		Thursday 20		Friday 21		Saturday 22	
	Area / Time	#	Area / Time	#	Area / Time	#	Area / Time	#	Area / Time	#	Area / Time	#	Area / Time	#	Area / Time	#
Men's Windsurfer	Escola Naval 1300	3	Pão de Açucar 1310	3	Reserve	0	Escola Naval 1300	3	Pão de Açucar 1310	3	Pão de Açucar 1300	*M	Reserve	0		
Women's Windsurfer	Escola Naval 1310	3	Pão de Açucar 1300	3	Reserve	0	Escola Naval 1310	3	Pão de Açucar 1300	3	Pão de Açucar 1400	*M	Reserve	0		
Men's One Person Dinghy	Ponte 1300	2	Niterói 1310	2	Pai 1300	2	Reserve	0	Copacabana 1310	2	Escola Naval 1300	2	Pão de Açucar 1300	*M	Reserve	0
Women's One Person Dinghy	Ponte 1310	2	Niterói 1300	2	Pai 1310	2	Reserve	0	Copacabana 1300	2	Escola Naval 1310	2	Pão de Açucar 1345	*M	Reserve	0
Men's One Person Dinghy (Heavyweight)			Ponte 1300	2	Copacabana 1300	2	Pão de Açucar 1300	2	Reserve	0	Pai 1300	2	Escola Naval 1300	2	Pão de Açucar 1300	*M
Men's Two Person Dinghy			Pai 1300	2	Escola Naval 1310	2	Niterói 1300	2	Reserve	0	Copacabana 1310	2	Ponte 1300	2	Pão de Açucar 1400	*M
Women's Two Person Dinghy			Pai 1310	2	Escola Naval 1300	2	Niterói 1310	2	Reserve	0	Copacabana 1300	2	Ponte 1310	2	Pão de Açucar 1500	*M
Men's Skiff			Escola Naval 1530	3	Pão de Açucar 1300	3	Reserve	0	Niterói 1300	3	Ponte 1300	3	Pão de Açucar 1430	*M	Reserve	0
Women's Skiff			Escola Naval 1300	3	Niterói 1300	3	Reserve	0	Ponte 1300	3	Pão de Açucar 1500	3	Pão de Açucar 1515	*M	Reserve	0
Mixed Multihull			Copacabana 1300	3	Ponte 1300	3	Reserve	0	Escola Naval 1300	3	Niterói 1300	3	Pão de Açucar 1600	*M	Reserve	0

*M = Medal Race

ADDENDUM Q – UMPIRED FLEET RACING

Under rule 86.2 and Regulation 28.1.3, the ISAF has approved the use of these sailing instructions as an addendum to the sailing instructions in World Championship Grade, Grade 1 and Grade C1 events and the ISAF Sailing World Cup from January 21, 2013 and until changed, for umpired fleet racing in the last race(s) of each series for the Olympic classes. Similar events are also encouraged to use the addendum. This can be done under rule 86.3 if the national authority prescribes that rule changes are allowed for the purpose of development and testing. Please note that the national authority may prescribe that such changes require its approval. Events that use this addendum are requested to provide feedback to the ISAF to support further development.

Races may be sailed under the sailing instructions in this addendum only if the notice of race so states and the addendum is included in the sailing instructions.

Use of this addendum is recommended for races in which about ten one-design boats compete with umpires present. There should be one umpire boat for every three or four boats in the fleet.

When Addendum Q is printed in the sailing instructions, this paragraph and the three paragraphs above should be deleted. Nothing below should be changed or deleted.

This addendum has been approved by ISAF in accordance with rule 86.2 and ISAF Regulation 28.1.3.

Version: January 21, 2013

Marginal marks indicate important changes from the previous version.

These sailing instructions change the definition Proper Course, and rules 20, 28.2, 44, 60, 61, 62, 63, 64.1, 65, 66, 70, 78.3 and B5.

Q1 CHANGES TO RACING RULES

Additional changes to rules are made in instructions Q2, Q3, Q4, and Q5.

Q1.1 Changes to the Definitions and the Rules of Part 2 and Part 4

- (a) Add to the definition Proper Course: 'A boat taking a penalty or manoeuvring to take a penalty is not sailing a *proper course*.'
- (b) When rule 20 applies, the following arm signals are required in addition to the hails:
 - (1) for 'Room to tack', repeatedly and clearly pointing to windward; and
 - (2) for 'You tack', repeatedly and clearly pointing at the other boat and waving the arm to windward.

Instruction Q1.1(b) does not apply to boards.

Q1.2 Changes to Rules Involving Protests, Requests for Redress, Penalties and Exoneration

- (a) The first sentence of rule 44.1 is replaced with: 'A boat may take a One-Turn Penalty when she may have broken a rule of Part 2 (except rule 14 when she has caused damage or injury) or rule 31 or 42 while *racing*.'
- (b) For boards, the One-Turn Penalty is one 360° turn with no requirement for a tack or a gybe.
- (c) Rule 60.1 is replaced with 'A boat may protest another boat or request redress provided she complies with instructions Q2.1 and Q2.4.'

- (d) The third sentence of rule 61.1(a) and all of rule 61.1(a)(2) are deleted. Rule B5 is deleted.
- (e) Rules 62.1(a), (b) and (d) are deleted. In a race where this addendum applies, there shall be no scoring adjustments for redress given under any of these rules for a previous race.
- (f) Rule 64.1(a) is changed so that the provision for exonerating a boat may be applied by the umpires without a hearing, and it takes precedence over any conflicting instruction of this addendum.
- (g) Rules P1 to P4 shall not apply.

Q2 PROTESTS AND REQUESTS FOR REDRESS BY BOATS

Q2.1 While racing, a boat may protest another boat under a rule of Part 2 (except rule 14) or under rule 31 or 42; however, a boat may only protest under a rule of Part 2 for an incident in which she was involved. To do so she shall hail 'Protest' and conspicuously display a red flag at the first reasonable opportunity for each. She shall remove the flag before, or at the first reasonable opportunity after a boat involved in the incident has taken a penalty voluntarily or after an umpire's decision. However, a boat need not display a red flag.

Q2.2 A boat that protests as provided in instruction Q2.1 is not entitled to a hearing. Instead, a boat involved in the incident may acknowledge breaking a rule by taking a One-Turn Penalty as described in rule 44.2. If the protested boat does not take a penalty voluntarily, an umpire will decide whether to penalize any boat and signal the decision as provided in instruction Q3.1.

Q2.3 At the finishing line, the race committee will inform the competitors about each boat's finishing place or scoring abbreviation. After this has been done for all boats, the race committee will promptly display flag B with one sound. Two minutes later flag B will be removed with one sound.

Q2.4 A boat intending to

- (a) protest another boat under a rule other than instruction Q3.2 or Q4.2(a), or a rule listed in instruction Q2.1,
- (b) protest another boat under rule 14 if there was contact that caused damage or injury, or
- (c) request redress

shall hail the race committee before or during the display of flag B. The same time limit applies to protests under instructions Q5.4 and Q5.5. The protest committee may extend the time limit if there is good reason to do so.

Q2.5 The race committee will promptly inform the protest committee about any protests or requests for redress made under instruction Q2.4.

Q3 UMPIRE SIGNALS AND IMPOSED PENALTIES

Q3.1 An umpire will signal a decision as follows:

- (a) A green and white flag with one long sound means 'No penalty.'
- (b) A red flag with one long sound means 'A penalty is imposed or remains outstanding.' The umpire will hail or signal to identify each such boat.

- (c) A black flag with one long sound means 'A boat is disqualified.' The umpire will hail or signal to identify the boat disqualified.

- Q3.2** (a) A boat penalized under instruction Q3.1(b) shall take a One-Turn Penalty as described in rule 44.2.
- (b) A boat disqualified under instruction Q3.1(c) shall promptly leave the course area.

Q4 PENALTIES AND PROTESTS INITIATED BY AN UMPIRE; ROUNDING OR PASSING MARKS

Q4.1 When a boat

- (a) breaks rule 31 and does not take a penalty,
- (b) breaks rule 42,
- (c) gains an advantage despite taking a penalty,
- (d) deliberately breaks a rule,
- (e) commits a breach of sportsmanship, or
- (f) fails to comply with instruction Q3.2 or to take a penalty when required to do so by an umpire,

an umpire may penalize her without a protest by another boat. The umpire may impose one or more One-Turn Penalties to be taken as described in rule 44.2, each signalled in accordance with instruction Q3.1(b), or disqualify her under instruction Q3.1(c), or report the incident to the protest committee for further action. If a boat is penalized under instruction Q4.1(f) for not taking a penalty or taking a penalty incorrectly, the original penalty is cancelled.

- Q4.2** (a) A boat shall not round or pass a mark on the wrong side. If she does so, she may correct her error as provided in rule 28.2 only if she does so before she rounds or passes the next mark or finishes.
- (b) When a boat breaks instruction Q4.2(a) and fails to correct her error before rounding or passing the next mark or finishing, an umpire may disqualify her under instruction Q3.1(c).

- Q4.3** An umpire who decides, based on his own observation or a report received from any source, that a boat may have broken a rule, other than instruction Q3.2 or Q4.2(a) or a rule listed in instruction Q2.1, may inform the protest committee for its action under rule 60.3. However, he will not inform the protest committee of an alleged breach of rule 14 unless there is damage or injury.

Q5 PROTESTS; REQUESTS FOR REDRESS OR REOPENING; APPEALS; OTHER PROCEEDINGS

- Q5.1** No proceedings of any kind may be taken in relation to any action or non-action by an umpire.

- Q5.2** A boat may not base an appeal on an alleged improper action, omission or decision of the umpires or the protest committee. In rule 66 the third sentence is changed to 'A *party* to the hearing may not ask for a reopening.'

- Q5.3** (a) Protests and requests for redress need not be in writing.
- (b) The protest committee may take evidence and conduct the hearing in any way it considers appropriate and may communicate its decision orally.

- (c) If the protest committee decides that a breach of a rule has had no effect on the outcome of the race, it may impose a penalty of points or fraction of points or make another arrangement it decides is equitable, which may be to impose no penalty.

Q5.4 The race committee will not protest a boat, except following a report under rule 43.1(c) or 78.3.

Q5.5 The protest committee may protest a boat under rule 60.3. However, it will not protest a boat for breaking instruction Q3.2 or Q4.2(a), a rule listed in instruction Q2.1, or rule 14 unless there is damage or injury.